

A multi-functional rubber recreational flooring, designed for commercial, residential, industrial, and fitness applications. Dura-Speck Sports Floor offers superior walking comfort, slip resistance, and better sound and shock absorption compared to other flooring products. Ideal usage in play areas, golf shops, fitness centers, home gyms, daycares, locker rooms, cardio areas, ice arenas, and retail flooring.



**Material:** Recycled rubber compound obtained as post consumer recycled waste. Color chips are EPDM rubber.

**Thickness:** 1/4", 3/8"

**Surface:** Smooth

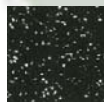
**Warranty:** 3 years conditional

**Options:** Interlocking tile  
Straight edge tile

## Colors



Black



White



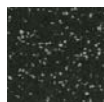
Yellow



Red



Ivory



Gray



Green



Blue

## Tiles

Item No.	Description	Size	Weight lbs. ea.
836S1433	Straight Edge Tile	1/4" x 3' x 3'	13.5
836I1433	Interlocking Tile	1/4" x 3' x 3'	12.3
836S3833	Straight Edge Tile	3/8" x 3' x 3'	19.8
836I3833	Interlocking Tile	3/8" x 3' x 3'	18

## Rolls

Item No.	Description	Size	Weight lbs. ea.
836H1433	Half Roll	1/4" x 48" x 24'9"	151
836F1433	Full Roll	1/4" x 48" x 49'6"	302
836H3833	Half Roll	1/4" x 48" x 24'9"	221
836F3833	Full Roll	1/4" x 48" x 49'6"	442

## Accessories

Item No.	Description	Coverage	Weight lbs. ea.
837A0002	2 Gallon Adhesive	150 - 200 sq.ft.	25
837A0005	5 Gallon Adhesive	375 - 400 sq.ft.	60