

Custom floor covering for entrances where oversized or wall to wall coverage is needed. The heavy duty needle punch 43 ounce fiber is the perfect commercial high traffic floor covering product. Superior performance as a wiper and/or scraper mat. Needle punch construction ensures no edge ravel even when cut. Latex gel foam backing is moisture resistant. Use in recess, glue down floor covering, or as a loose lay mat with sewn on bevel edge.

Material: 100% solution dyed UV stable polypropylene fiber pin surface with 15% post-consumer recycled content
Thickness: 7/16"
Warranty: Standard

Full Rolls		
Item No.	Size	Weight
388R0079	6'7" x 68'	269 lbs.ea.
388R0158	13'2" x 82'	448 lbs.ea.

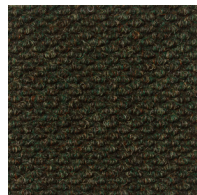
Cut Lengths		
Item No.	Size	Weight
388C0158	Up to 13'2" wide	.05 lbs./sq.ft.
388B0000	Beveled nosing optional	0.4 lbs./lin.ft.
315A0001	1 Gallon Adhesive	9 lbs.ea.

Note: Product is priced by full width of 6'7" or 13'2"

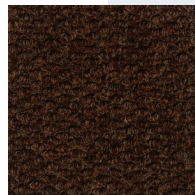
Colors:



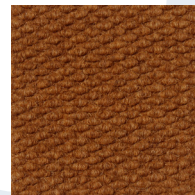
Sapphire



Spruce



Sable Brown



Natural



Midnight Blue



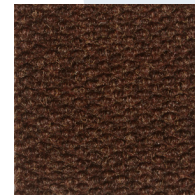
Dark Gray



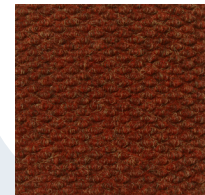
Black



Charcoal



Tweed Brown



Autumn Red