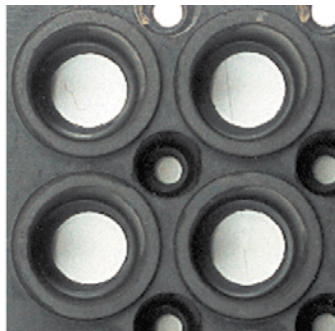




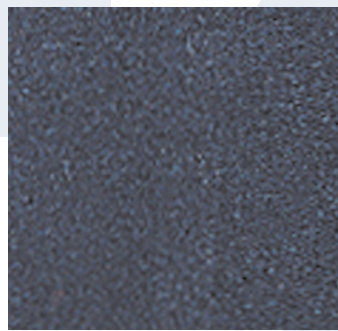
Thick mat is perfect for most industrial applications. Available in solid or open mesh design. Mat has built-in interlocking system that can be connected to extend length and width. Beveled edges available.

Material: Grease-resistant rubber compound
Thickness: 5/8"
Surface: Workstation: Open circular
Workstation Solid: Textured

Item No.	Description	Size	Weight lbs.
430S3636BK	Solid Tile	36" x 36"	23
430S3636BK	OpenTile	36" x 36"	20
430BF36BK	36" black bevel edge	2" x 36"	2.5
430BF40BK	40" black bevel edge	2" x 40"	2.7



Open



Solid