

Durable Corporation
(800) 537-1603

Model: B620-11-SFP1

MODEL: B620-11-SFP1

Size
Projection 6-5/8"
Height 20"

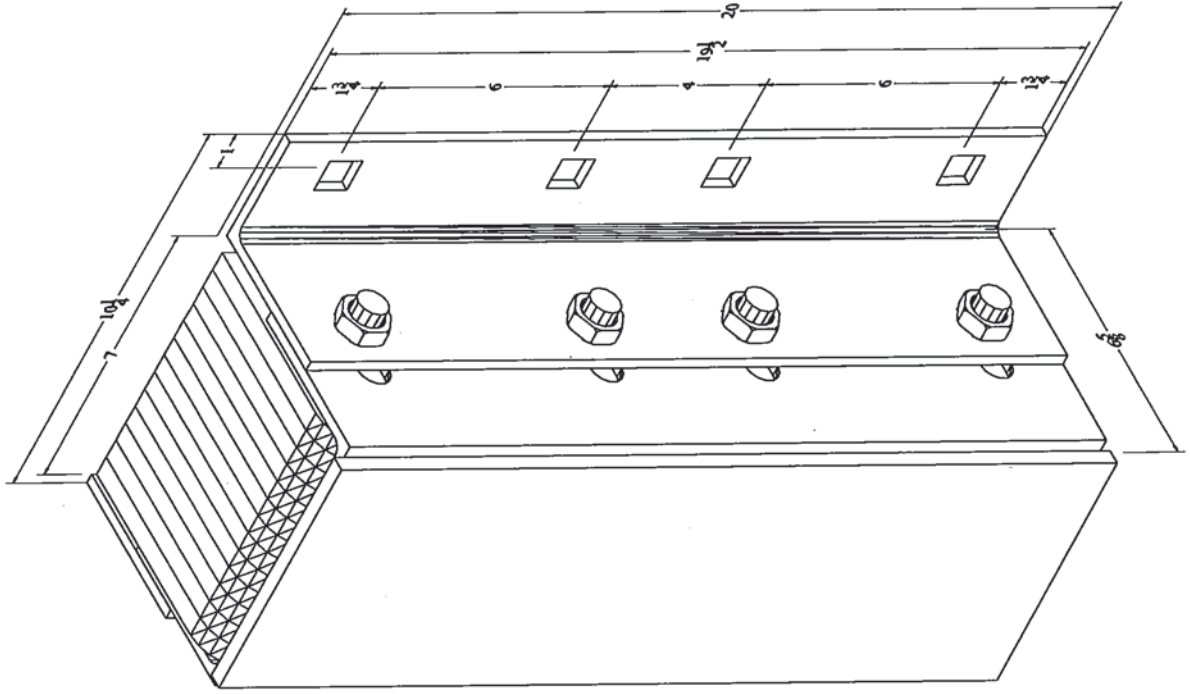
Length:
-Overall 10-1/4"
-Rubber 7"
Angle Size (1) 1/4"x3"x4"x19-1/2"
Plate Size (1) 1/4"x4"x19-1/2"
Slot Angle Size (2) 1/4"x3"x4"x19-1/2"
Face Plate Size (1) 3/8"x6-3/8"x20"

Bolt Heads Are Inscribed
"DURABLE CORP"

Date: 02/14/13

All measurements are +/- 1/8"

Confidential -- Property of Durable Corporation



Durable Corporation
(800) 537-1603

Model: B624-11-SF

MODEL: B624-11-SF

Size
Projection 6-5/8"
Height 24"

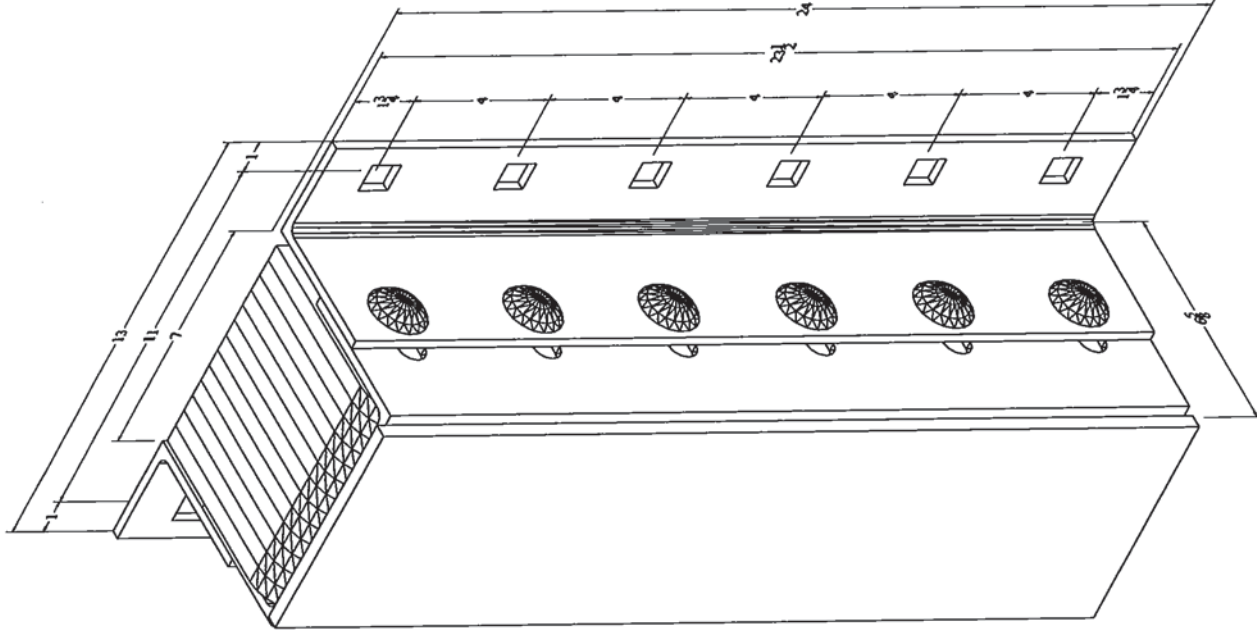
Length:
-Overall 13"
-Anchor Holes 11"
-Rubber 7"
Angle Size (2) 1/4"x3"x4"x23-1/2"
Slot Angle Size (2) 1/4"x3"x4"x23-1/2"
Face Plate Size (1) 3/8"x6-3/8"x24"

Bolt Heads Are Inscribed
"DURABLE CORP"

Date: 02/06/13

All measurements are +/- 1/8"

Confidential -- Property of Durable Corporation



Durable Corporation
(800) 537-1603

Model: B624-11-SFP1

MODEL: B624-11-SFP1

Size
Projection 6-5/8"
Height 24"

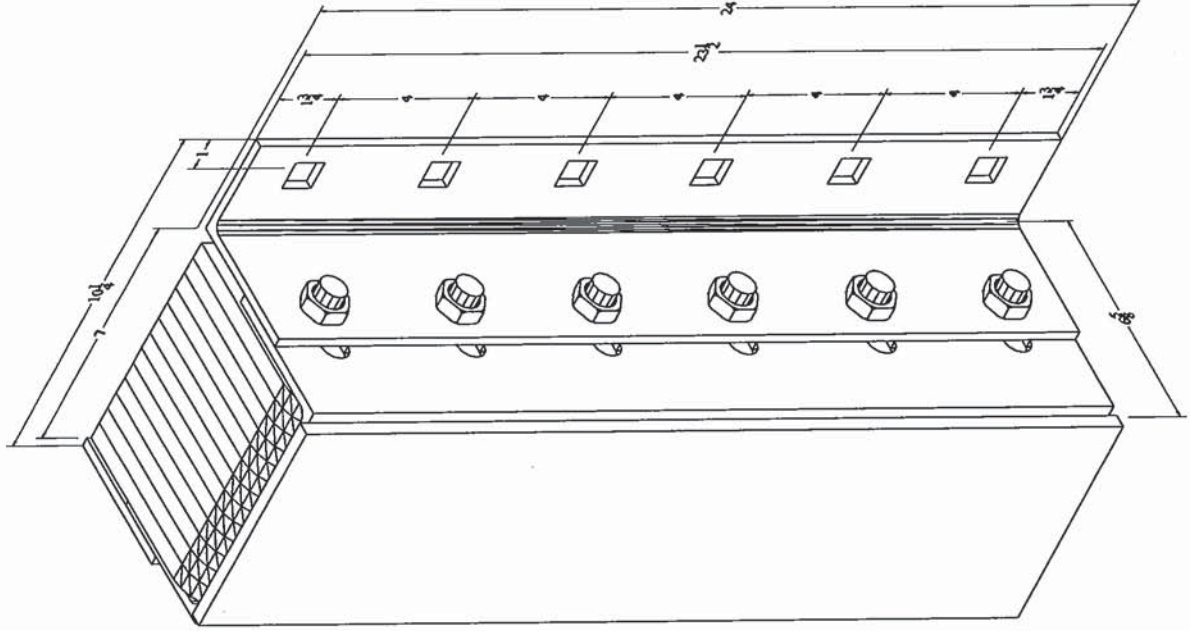
Length:
-Overall 10-1/4"
-Rubber 7"
Angle Size (1) 1/4"x3"x4"x23-1/2"
Plate Size (1) 1/4"x4"x23-1/2"
Slot Angle Size (2) 1/4"x3"x4"x23-1/2"
Face Plate Size (1) 3/8"x6-3/8"x24"

Bolt Heads Are Inscribed
"DURABLE CORP"

Date: 02/14/13

All measurements are +/- 1/8"

Confidential -- Property of Durable Corporation



Durable Corporation
(800) 537-1603

Model: B636-11-SF

MODEL: B636-11-SF

Size
Projection 6-5/8"
Height 36"

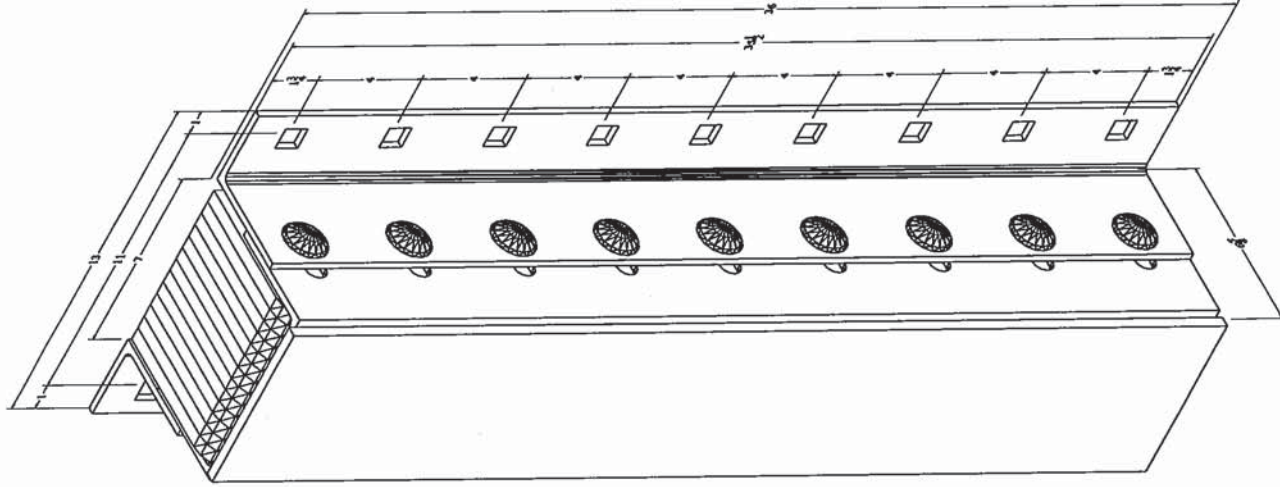
Length:
-Overall 13"
-Anchor Holes 11"
-Rubber 7"
Angle Size (2) 1/4"x3"x4"x35-1/2"
Slot Angle Size (2) 1/4"x3"x4"x35-1/2"
Face Plate Size (1) 3/8"x6-3/8"x36"

Bolt Heads Are Inscribed
"DURABLE CORP"

Date: 02/06/13

All measurements are +/- 1/8"

Confidential -- Property of Durable Corporation



Durable Corporation
(800) 537-1603

Model: B636-11-SFP1

MODEL: B636-11-SFP1

Size
Projection 6-5/8"
Height 36"

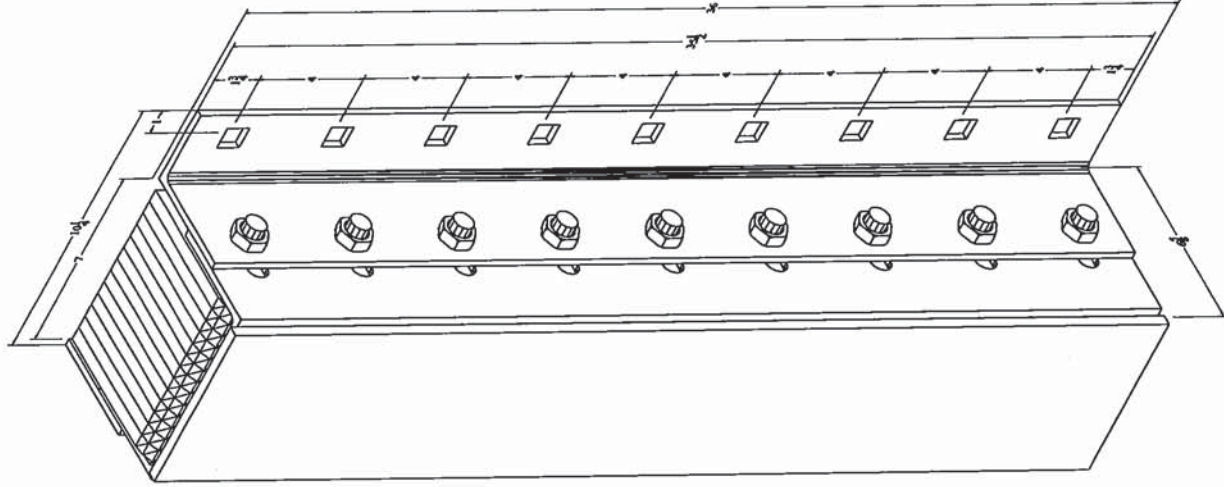
Length:
-Overall 10-1/4"
-Rubber 7"
Angle Size (1) 1/4"x3"x4"x35-1/2"
Plate Size (1) 1/4"x4"x35-1/2"
Slot Angle Size (2) 1/4"x3"x4"x35-1/2"
Face Plate Size (1) 3/8"x6-3/8"x36"

Bolt Heads Are Inscribed
"DURABLE CORP"

Date: 02/14/13

All measurements are +/- 1/8"

Confidential -- Property of Durable Corporation



Durable Corporation
(800) 537-1603

Model: B624-11-P1

MODEL: B624-11-P1

Size
Projection 6"
Height 24"

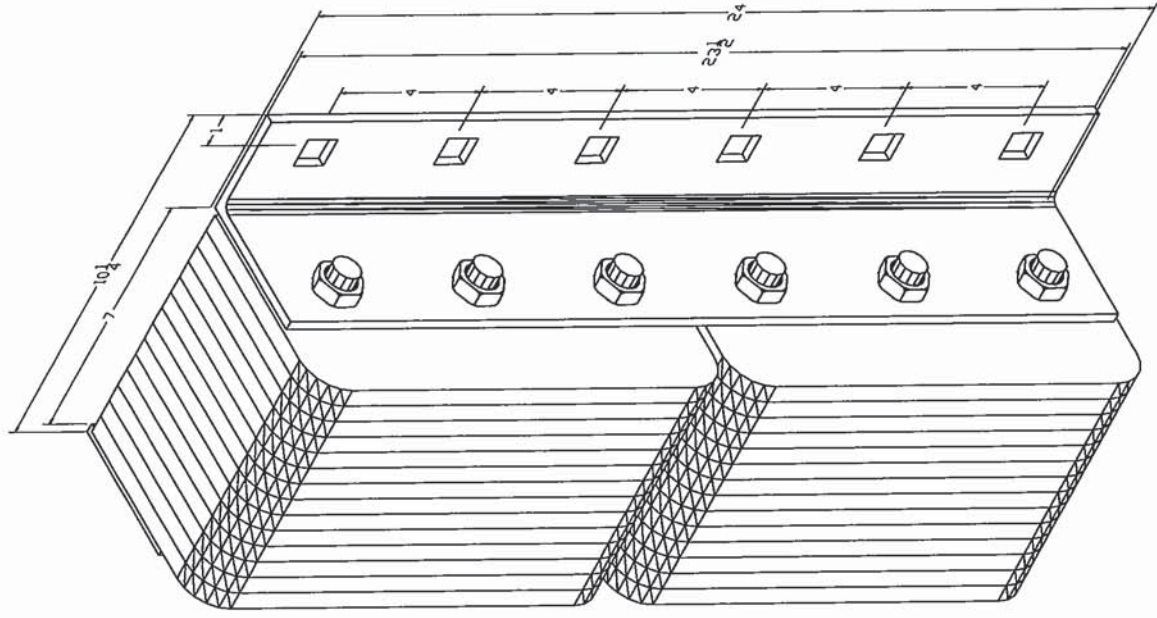
Length:
-Overall 10-1/4"
-Rubber 7"
Angle Size (1) 1/4"x3"x4"x23-1/2"
Plate Size (1) 1/4"x4"x23-1/2"

Bolt Heads Are Inscribed
"DURABLE CORP"

Date: 04/07/09

All measurements are +/- 1/8"

Confidential - Property of Durable Corporation



Durable Corporation
(800) 537-1603

Model: B636-11

MODEL: B636-11

Size
Projection 6"
Height 36"

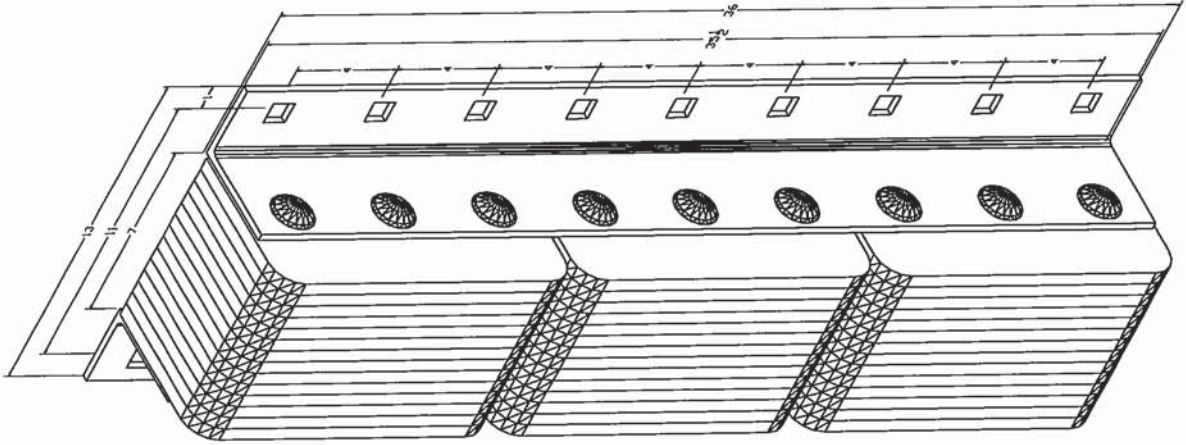
Length:
-Overall 13"
-Anchor Holes 11"
-Rubber 7"
Angle Size (2) 1/4"x3"x4"x35-1/2"

Bolt Heads Are Inscribed
"DURABLE CORP"

Date: 04/07/09

All measurements are +/- 1/8"

Confidential -- Property of Durable Corporation



Durable Corporation
(800) 537-1603

Model: B636-11-P1

MODEL: B636-11-P1

Size
Projection 6"
Height 36"

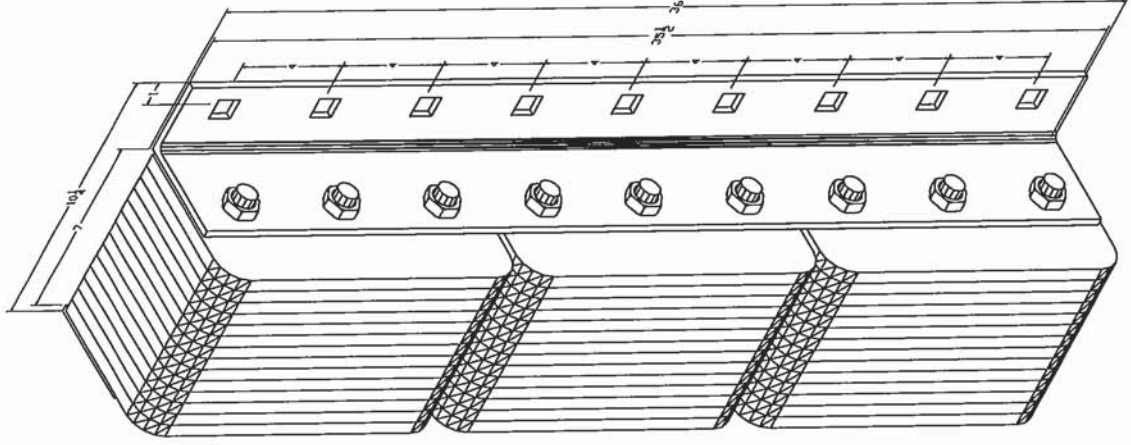
Length:
-Overall 10-1/4"
-Rubber 7"
Angle Size (1) 1/4"x3"x4"x35-1/2"
Plate Size (1) 1/4"x4"x35-1/2"

Bolt Heads Are Inscribed
"DURABLE CORP"

Date: 04/07/09

All measurements are +/- 1/8"

Confidential -- Property of Durable Corporation



Durable Corporation
(800) 537-1603

Model: B4520-11-STP1

MODEL: B4520-11-STP1

Size
Projection 3-7/8"
Height 20"

Length:
-Overall 10-1/4"
-Rubber 7"
Angle Size 1/4"x3"x3"x19-1/2"
Plate Size 1/4"x3"x19-1/2"
Slot Angle Size 1/4"x3"x3"x19-1/2"
Face Plate Size 3/8"x6-3/8"x19-7/8

Bolt Heads Are Inscribed
"DURABLE CORP"

Date: 06/08/11

All measurements are +/- 1/8"

Confidential -- Property of Durable Corporation

